



RONDA 2600®

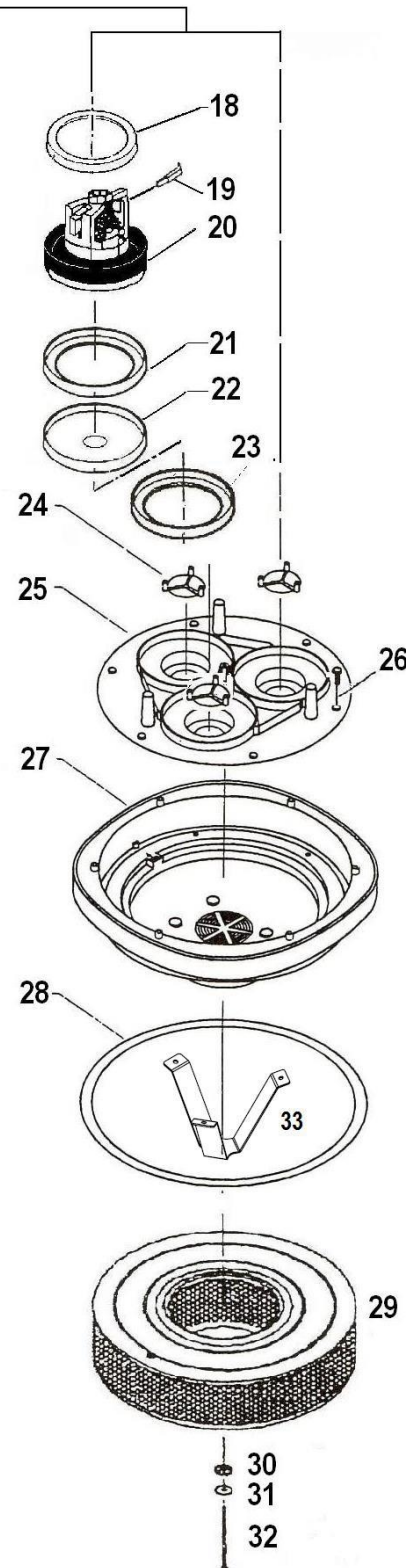
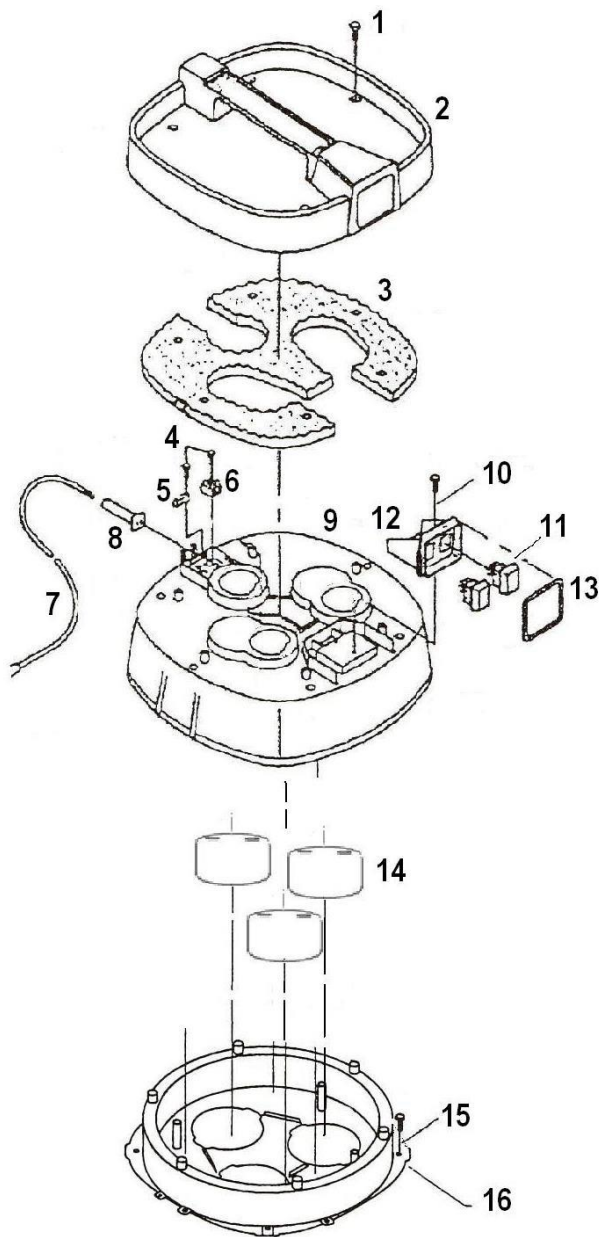
09-19 VER3

A0.80.1028

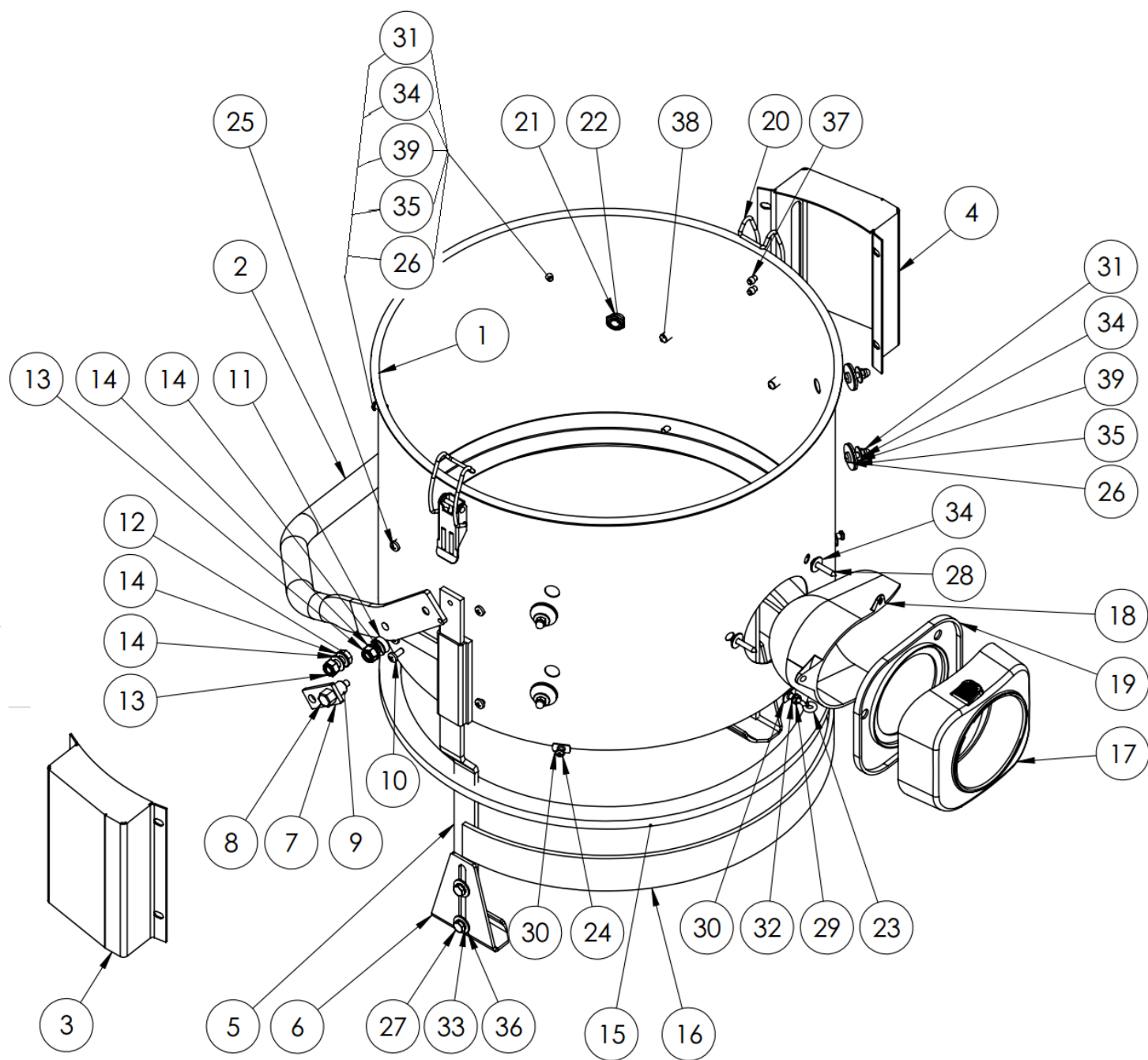
RONDA

Spare Parts List – Top

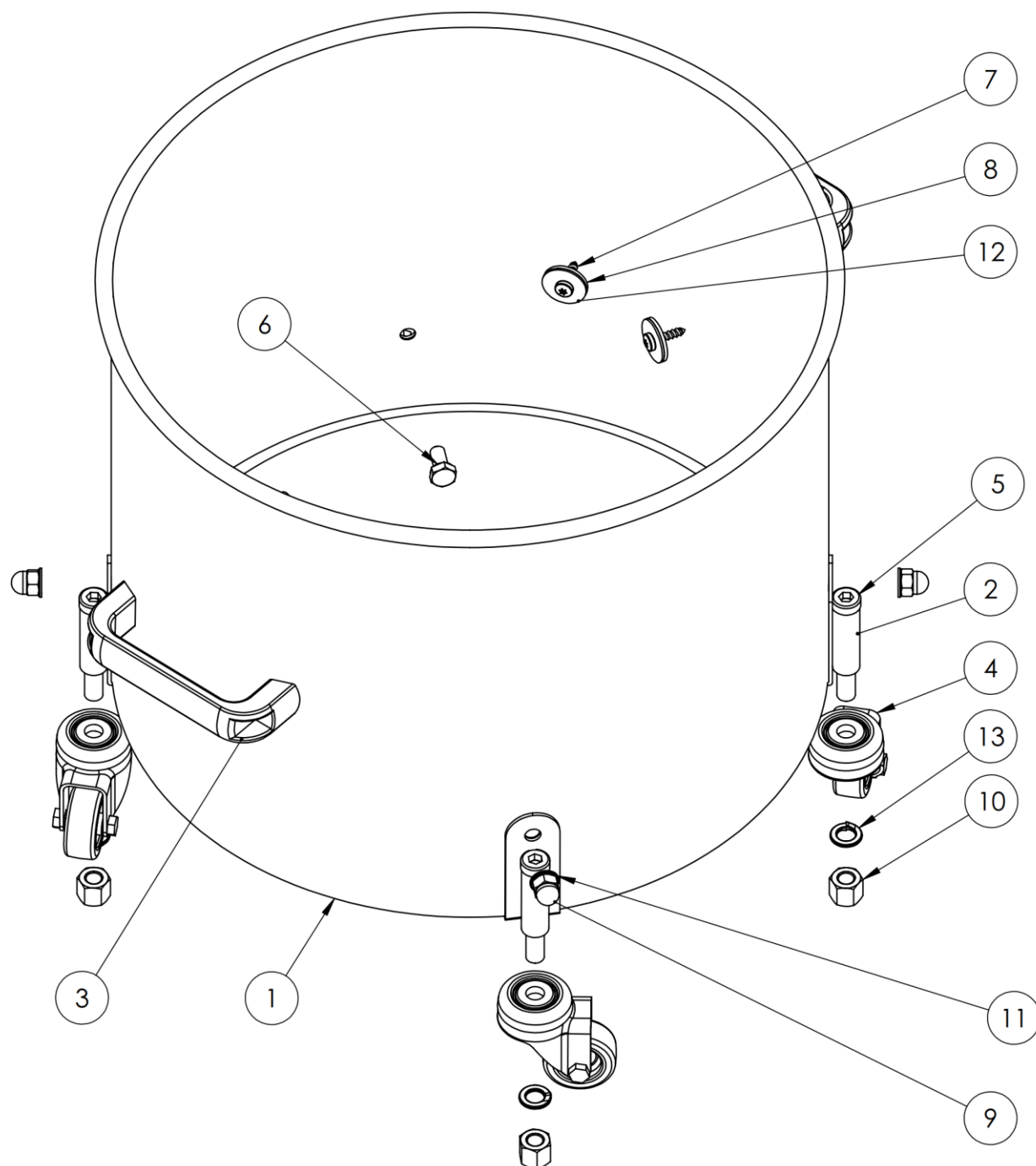
2600



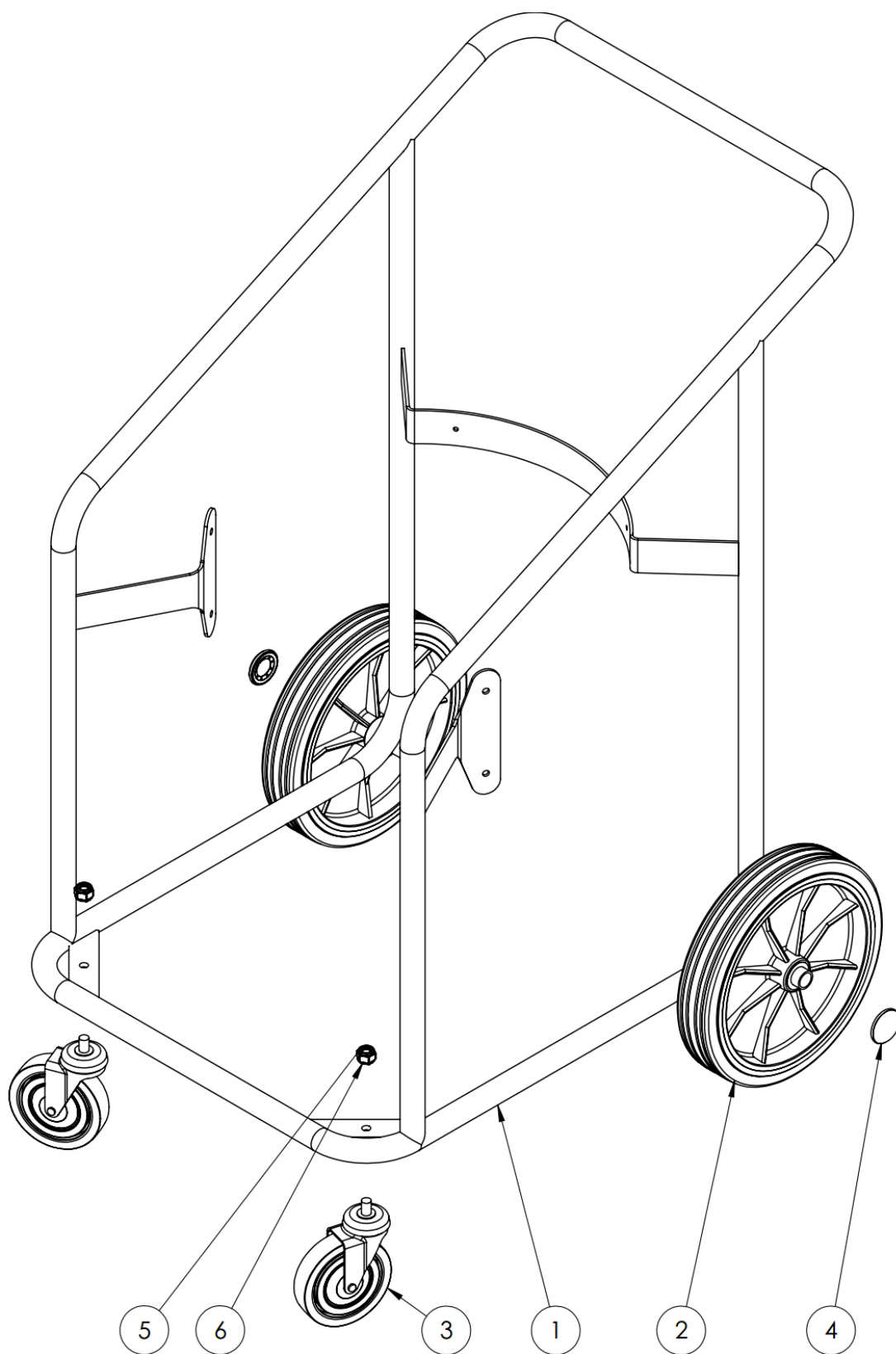
RONDA		Spare Parts List – Motor Top		2600
Pos	Beskrivelse	Description	Beschreibung	Item
1	Plastite skrue 5 x 22mm	Plastite screw 5 x22mm	Plastite Schraube 5 x 22mm	81971510
2	Topdæksel	Top cover	Deckel	81893840
3	Lyddæmperskum	Noise reduction foam	Schaum-Geräuschkämpfer	81934030
4	Plastite skrue 2,9x19mm	Plastite screw 2,9x19mm	Plastite Schraube 2,9x19	81970030
5	Aflastningsklemme	Bracket	Zugentlastung	81750060
6	Kronmuffe	Supply terminal	Lüsterklemme	81750041
7	EI-kabel med stik DK	Cable with plug DK	Kabel mit Stecker DK	81751430
7	EI-kabel med stik Export	Cable with plug Export	Kabel mit Stecker Export	81750010
7A	Stikprop 15 A AUS /NZ	Plug 15A AUS / NZ	Stecker 15A AUS/NZ	85750046
8	Ledningsindføring	Packing	Dichtung	81750080
9	Motoroverdel	Motor top part	Motor Oberteil	81893990
10	Plastite Skrue 5x16mm	Plastite screw 5x16mm	Plastite Schraube 5x16mm	81970140
11	Kontakt	Switch	Schalter	81750110
12	Afbryderhus	Housing	Gehäuse	81893760
13	Pakning	Gasket	Dichtung	81953770
14	Støjdæmpningskappe	Noise reduction cap	Schalldämpferkappe	81890175
15	Skrue	Screw	Schraube	81970140
16	Luftledeplade	Air baffle	Luftleitplatte	81894000
18	Motorpakning	Motor gasket	Motordichtung	81950200
19	Motorkul	Motor coal	Motorkohl	8173176B
20	Motor A169	Motor A169	Motor A169	84720015
21	Motorpakning	Motor gasket	Motordichtung	81950013
22	Motorbund	Motor bottom	Motorboden	81730004
23	Motorpakning	Motor gasket	Motordichtung	81950610
24	Ventil	Valve	Ventil	81891540
25	Motorplade	Motor plate	Motorplatte	81894010
26	Plastite skrue 5x16mm	Plastite screw 5x16mm	Plastite Schraube 5x16mm	81970140
27	Motorunderdel	Motortop lower part	Motorkopf Unterteil	8189387A
28	Beholderpakning	Container gasket	Behälterdichtung	81951130
29	HEPA-filter	HEPA-filter	HEPA-Filter	84675007
31	Gummiskive	Rubber washer	Scheibe Gummi	8197099A
32	Skrue M6x16mm	Screw M6x16mm	Schraube M6x16mm	83975214
33	Anker for HEPA filter	Anchor for HEPA-filter	Anker für HEPA-Filter	81970102
44				



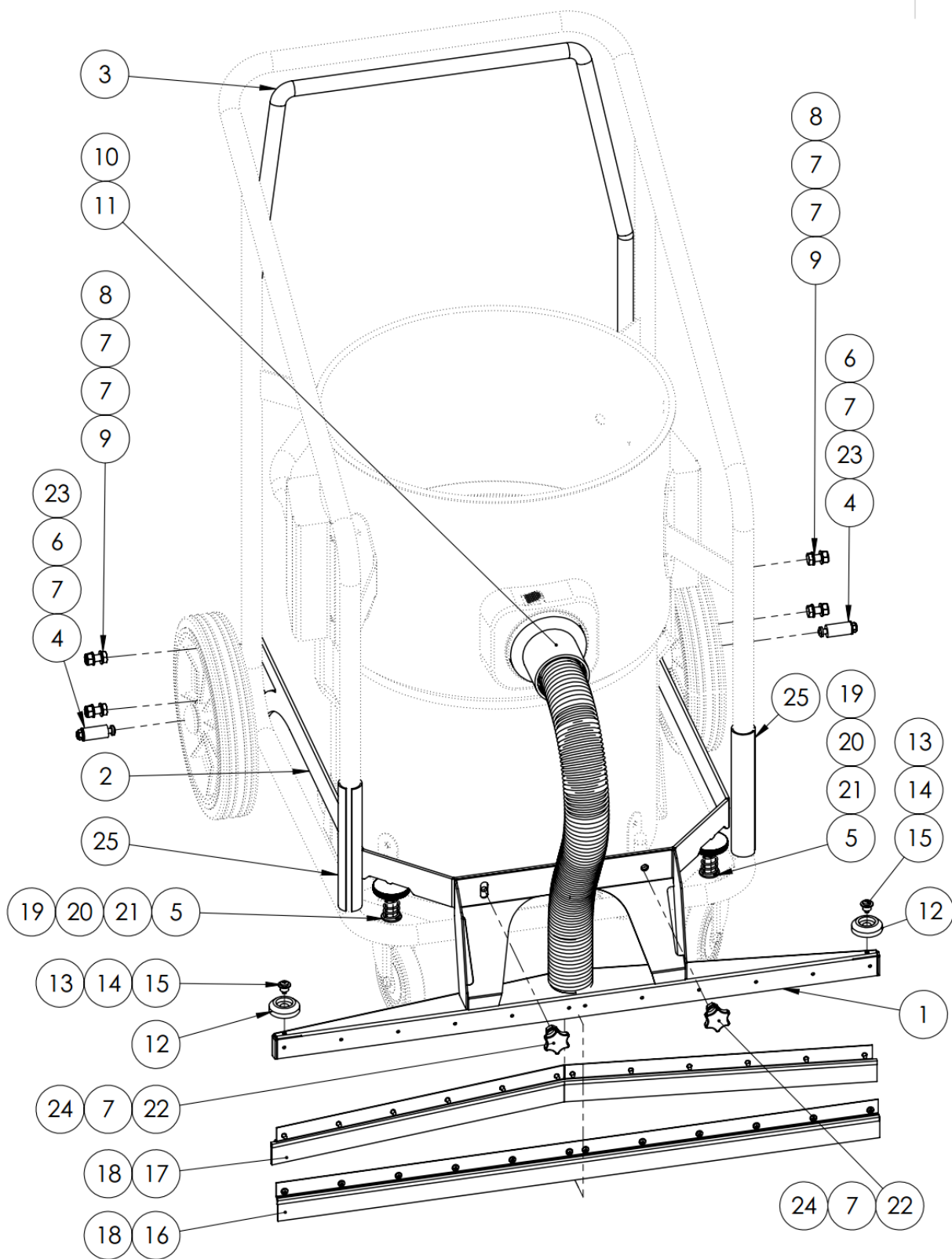
RONDA		Spare Parts List – Adapter		2600
Pos	Beskrivelse	Description	Beschreibung	Item
1				
2	Håndtag, sort	Handle, Black	Heber - griff, Schwartz	81.85.1170
3	Skjold for mekanisme, Højre	Cover for mechanism, R	Abdeckung für Mechanismus, R	81.85.1171
4	Skjold for mekanisme, Venstre	Cover for mechanism, L	Abdeckung für Mechanismus, L	81.85.1172
5	Løftearm	Lifting arm	Hebearm	81.91.0522
6	Griber for beholder	Hook for container	Harken für Behälter	81.85.1173
7	Tap for løftearm (5)	Bolt for lifting arm (5)	Bolzen für Hebearm (5)	83.97.0072
8	Vippe beslag for (5)	Tilt bracket for (5)	Kip-Klammer für (5)	81.85.1174
9	Afstandsstykker for (7)	Spacer for (7)	Abstandhalter für (7)	83.97.0073
10	Skrue M5 x 12	Screw M5 x 12	Schraube M5 x 12	83.97.0027
11	Skrue M8x20	Screw M8x20	Schraube M8x20	83.97.0076
12	Bolt M8x20	Nut M8 x 20	Bolzen M8 x 20	83.97.0074
13	Låsemøtrik M8	Self-locking nut M8	Selbstsichernde Mutter M8	83.97.5193
14	8mm facetskive	8 mm washer	8 mm Facetscheibe	83.97.4440
15	Dafacell 10x20mm (1,4m)	Dafacell 10x20 mm (1.4m)	Dafacell 10x20 mm (1,4m)	83.96.0205
16	Stopring	End-stop	Anschlagring	83.89.0001
17	Beholderkobling Ø90	Container coupling Ø90	Behälterkupplung Ø90	81.81.148C
18	Plast luftleder for Ø90 kobling	Air guide tube for Ø90 cou.	Luftführungsrohr für Ø90 Kupp.	81.81.147B
19	Gummipakning for Ø90 kobling	Rubber seal for Ø90 coup.	Gummidichtung f'ur Ø90 Kupp.	81.95.1508
20	Beholderclips	Container latch	Behälterklammer	81.91.342A
21	Kontramøtrik ¼" BSPP	Lock nut ¼" BSPP	Gegenmutter ¼" BSPP	81.97.0019
22	Rørprop ¼" BSPP	Pipe plug ¼" BSPP	Rohrstopfen ¼" BSPP	81.97.0018
23	Øjeskrue M4x20mm	Eye screw M4x20 mm	Augenschraube M4x20 mm	83.97.6770
24	M4 x 6mm skrue	M4 x 6 mm screw	M4 x 6 mm Schraube	81.97.2391
25	M5 x 12mm skrue	M5 x 12 mm screw	M5 x 12 mm Schraube	83.97.0027
26	M5x14 mm skrue	M6 x 14 mm screw	M6 x 14 mm Schraube	83.97.4480
27	M6x10 bolt	M6 x 10 bolt	M6 x 10 Bolzen	81.97.1195
28	Pladeskrue 4,8x25mm	Tapping screw 4.8x25mm	Blechschrube 4,8x25mm	81.97.0011
29	M4 låsemøtrik	M4 self-locking nut	M4 selbstsichernde Mutter	83.96.0114
30	Svejsmøtrik M4 rustfri	Weld nut M4 stainless	Schweissmutter M4 rostfrei	
31	M5 topmøtrik	M5 cap nut	M5 Hutmutter	83.97.5196
32	Sikringsskive 4 mm	Lock washer 4 mm	Sicherungsscheibe 4 mm	83.97.0032
33	Sikringsskive 6 mm	Lock washer 6 mm	Sicherungsscheibe 6 mm	83.97.0022
34	Skærmskive Ø5/15mm	Protective washer Ø5/15 mm	Abdeckscheibe Ø5/15 mm	81.97.0771
35	Skive 6x24x1 mm	Washer 6x24x1 mm	Scheibe 6x24x1 mm	81.97.1000
36	Skive 18x6,4x1,6 mm	Washer 18x6.4x1.6 mm	Scheibe 18x6,4x1,6 mm	81.97.0008
38	Sort hætte Ø5,5 x 13mm	Black cap Ø5.5x13 mm	Schwarze Kappe Ø5,5x13 mm	81.97.0117
39	Gummiskive Ø25 mm	Rubber seal Ø25 mm	Gummidichtung Ø25 mm	81.97.099A
40				



RONDA		Spare Parts List		2600
Pos	Beskrivelse	Description	Beschreibung	Item
1	Stålbeholder D.406 H.300mm	Steel container D.406 H.300 mm	Stahlbehälter D.406 H.300 mm	83.79.0010
2	Gult hjulbeslag	Wheel support yellow	Gelber Rollenbeschlag	83.85.5190
3	Gult håndtag	Yellow handle	Gelber Handgriff	81.91.098A
4	Drejehjul Ø40	Castor Ø40	Rolle Ø40	81.87.3825
5	Unbraco – skrue M10x70mm	Allen screw M10x70mm	Unbraco M10x70mm	81.97.0045
6	Bolt M8x16mm	Bolt M8x16mm	Bolzen M8x16mm	83.97.5163
7	Plastite skrue 5x20mm	Plastite screw 5x20 mm	Plastite schraube 5x20 mm	81.97.0140
8	Gummiskive Ø25mm	Rubber seal Ø25 mm	Gummischeibe Ø25 mm	81.97.099A
9	M8 topmøtrik	M8 cap nut	M8 Hutmutter	81.97.0450
10	M10 møtrik høj	M10 Nut – High	M10 Mutter – hoch	81.97.1031
11	8mm facetskive	8 mm washer	8 mm Facetscheibe	83.97.4440
12	Skive 6x24x1mm	Washer 6x24x1 mm	Scheibe 6x24x1 mm	81.97.1000
13	M10 Fjederskive	M10 Spring washer	M10 federscheibe	83.97.0019



RONDA		Spare Parts List		2600
Pos	Beskrivelse	Description	Beschreibung	Item
1	Rammestativ u. hjul	Trolley frame without wheels	Rahmengestell ohne Räder	83.85.5001
2	Hjul D 250mm	Wheel D 250 mm	Rad D 250 mm	81.87.5070
3	Drejehjul D 100	Swirvel wheel D 100	Drehrolle D 100	81.87.9650
4	Starlock D20 med kappe	Starlock D20 with cap	Zierdeckel D20	81.85.5080
5	M10 låsemøtrik	M10 self-locking nut	M10 Gegenmutter	83.97.5178
6	M10 fjederskive	M10 lock washer	M10 Federscheibe	83.97.0019



RONDA		Spare Parts List		2600
Pos	Beskrivelse	Description	Beschreibung	Item
1	RN75/2 frontmundstykke - sort pulverlakeret	RN75/2 Front Nozzle - black painted	RN75/2 Frontdüse - schwarz lackiert	80.31.0098
2	Ronda vippeprofil for RN75 mundstykke.	Ronda tilt-profile for RN75 nozzle	Ronda Kipp-Profil für RN75 Düse	83.85.0750
3	Ronda hånd bøjle for løft af mundstykke RN75	Ronda RN75 Handle	Ronda RN75 Bügel	83.85.0751
4	Ronda/Ghibli afstandsstykke flad, L30mm D15mm	Ronda distance piece, D.15/d.6mm x 30mm, flat	Ronda Stützsteg, flach, L30mm D15mm d6mm,	83.97.4290
5	Skive 10,5x22x1,25mm	Washer 10,5x22x1,25mm	Scheibe 10,5x22x1,25mm	81.97.1650
6	Ronda/Ghibli M6 låsemøtrik	Ronda M6 self locking nut	Ronda M6 selbstsichernde	83.97.050A
7	Ronda/Ghibli 8mm facetskive	Ronda M8 washer	Ronda Facetscheibe 8mm	83.97.4440
8	Låsemøtrik M8 FZB	Self-locking nut M8	Selbstsichernde Mutter M8	83.97.5193
9	Bolt 8x 20	Bolt 8x 20	Bolzen 8 x 20	83.97.4768
10	Komplet slange med studs	Hose complete with coupling	Schlauch mit kupplung	84.54.3851
11	(10)	(10)	(10)	-
12	Hjul	Wheel	Rad	86.24.5082
13	Bøsning for hjul	Wheel -Bushing	Buchse für Rad	86.24.5083
14	Rustfri skærmskive Ø-5/15mm	Washer 5 mm inox	Rostfreie Planscheibe D.5mm	81.97.0771
15	M-skrue PHZ 5x12mm rustfri	PHZ, M5x12 mm, inox	PHZ M5x12 mm, rostfrei	83.97.4311
16	Komplet liste sæt	Complete set	Satz mit bürsten	85.46.2001
17	(16)	(16)	(16)	
18	M-skrue PHZ 4 x 6mm	PHZ M4 x 6 mm	PHZ M4 x 6 mm	81.97.2391
19	Fingerskrue Ø-44mm M10 x 16mm	Ø44mm x M10x16	Schraube D44mm M10x16mm	83.97.0056
20	6-kt. M10x25mm gevindmuffe	M10x25mm thread cuff, FZB	M10x25mm Gewindemuffe	83.97.0055
21	Trykfjeder 2x16x40mm	Comp. spring 2x16x40mm	Druckfeder 2x16x40mm	81.97.0079
22	Fingerskrue Ø-34mm x M8 indv. gevind.	screw D.34mm x M8 inside thread	Schraube D34mm x M8 Innengewinde	83.97.0054
23	6 x 50 bolt	6 x 50 Bolt	6 x 50 Bolzen	81.97.1304
24	6-kant bolt 8x16mm FZB fuldt gevind	Hexagonbolt 8x16 mm FZB fully threaded	Sechskantsschraube 8x16 mm FZB Vollgewinde	83.97.5163
25	Plast beskyttelsesskinne	Plastic Bumper	Kunststoffschiene	83.89.4500

NOTES:

CONTACT INFORMATION:

+45 86 82 43 66
V@BROENDUM.COM
WWW.BROENDUM.COM