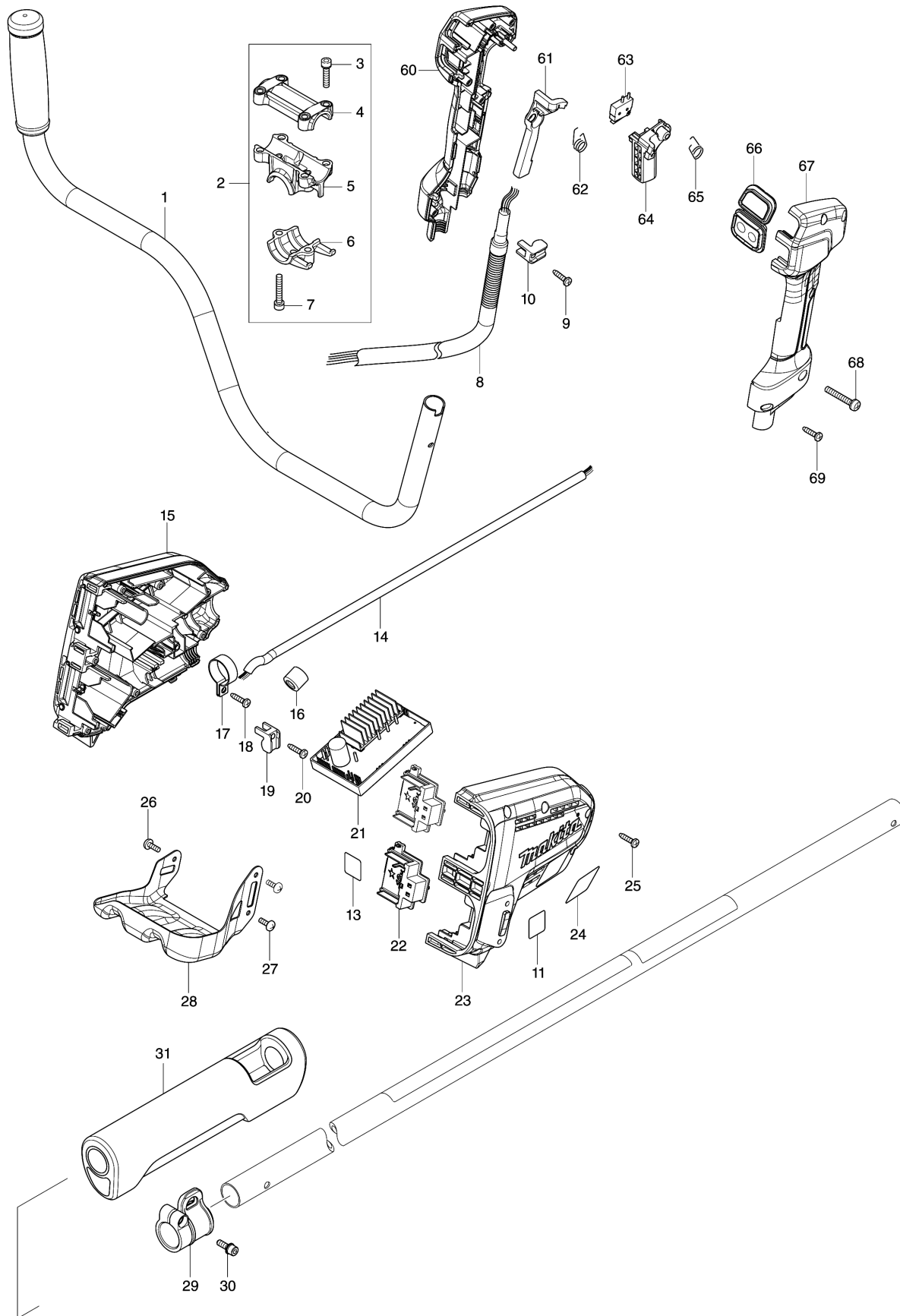
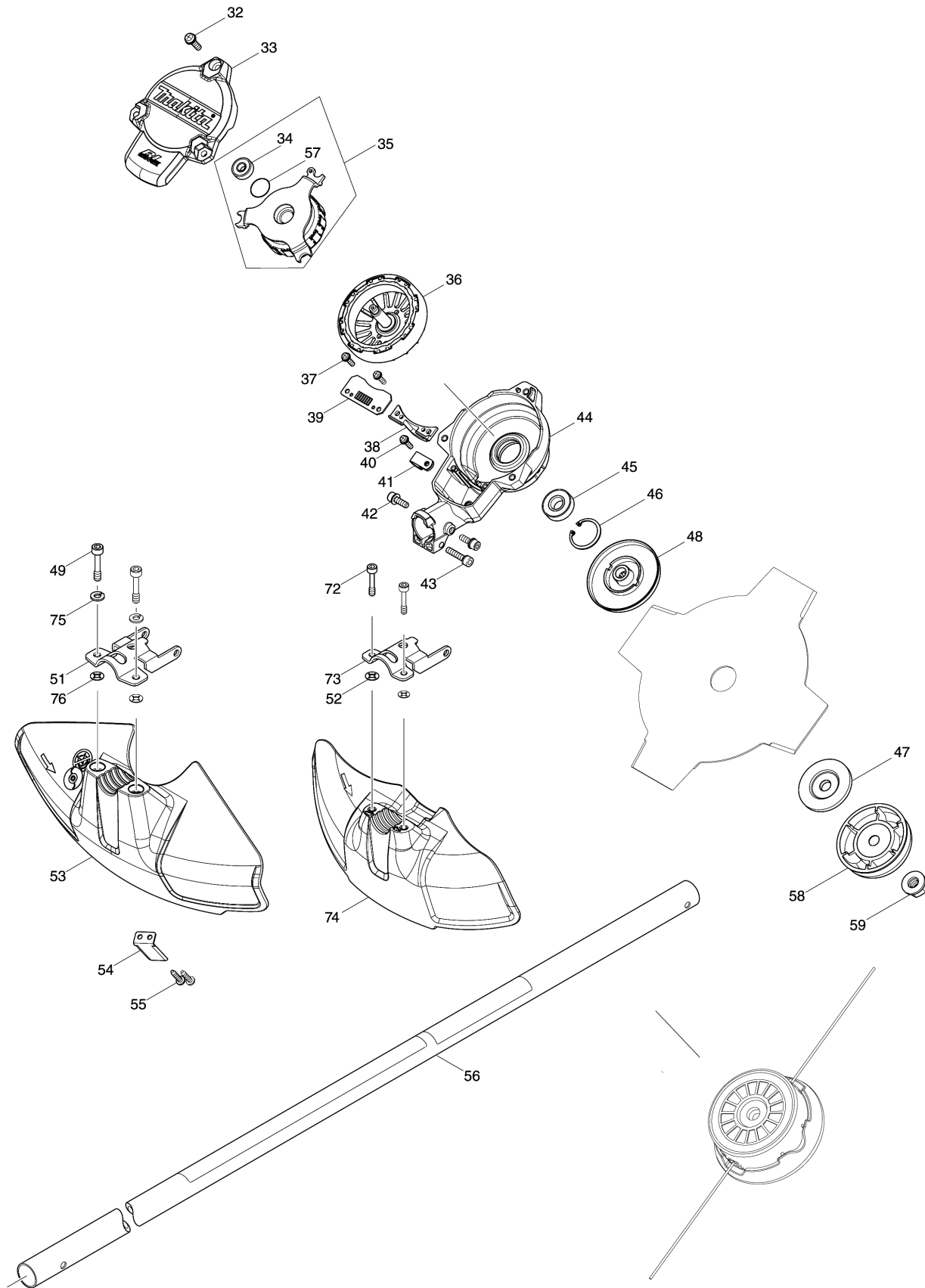


Model No.DUR368A CORDLESS GRASS TRIMMER



Model No.DUR368A CORDLESS GRASS TRIMMER



Model No.DUR368A CORDLESS GRASS TRIMMER

Item	Parts No.	Description	I/C	Qty	New/Old	Opt. 1	Opt. 2	Note
001	140L83-1	HANDLE 19 COMPLETE		1				
002	135395-3	HANDLE HOLDER ASS'Y		1				
D10		INC. 3-7						
003	922241-7	HEX. SOCKET HEAD BOLT M5X25		4				
004	318272-6	HANDLE HOLDER 1		1				
005	318273-4	HANDLE HOLDER 2		1				
006	318274-2	HANDLE HOLDER 3		1				
007	922251-4	HEX. SOCKET HEAD BOLT M5X30		2				
008	699118-8	POWER SUPPLY CORD UNIT		1				
009	266326-2	TAPPING SCREW 4X18		1				
010	687260-7	STRAIN RELIEF		1				
011	807E85-5	SOUND 92DB LABEL		1				
013	855V64-9	DUR368A SERIAL NO. LABEL		1				
014	699067-9	POWER SUPPLY CORD UNIT		1				
015	183L33-3	HOUSING SET		1				
C10	263005-3	RUBBER PIN 6		4				
C20	252126-6	HEX. LOCKING NUT M4-7		3				
D10		INC. 23						
016	688163-8	LINE FILTER		1				
017	346248-3	CLAMP 24		1				
018	266326-2	TAPPING SCREW 4X18		1				
019	687260-7	STRAIN RELIEF		1				
020	266326-2	TAPPING SCREW 4X18		1				
021	620A36-5	CONTROLLER		1				
022	644808-8	TERMINAL		2				
023	183L33-3	HOUSING SET		1				
C10	263005-3	RUBBER PIN 6		4				
C20	252126-6	HEX. LOCKING NUT M4-7		3				
D10		INC. 15						
024	855V55-0	DUR368A NAME PLATE		1				
025	266326-2	TAPPING SCREW 4X18		7				
026	251314-2	+ SCREW M4X12		1				
027	251314-2	+ SCREW M4X12		2				
028	346858-6	BATTERY GUARD		1				
029	168478-4	HANGER		1				
030	922228-9	H.S.H.BOLT M5X18 WITH WR		1				
031	424463-0	CUSHION		1				
032	911233-1	PAN HEAD SCREW M5X20		3				
033	455626-7	TOP COVER		1				
034	210062-2	BALL BEARING 607ZZ		1				
035	529146-8	STATOR ASS'Y		1				

Please order the parts with part number.

Print Date 12/7/2019

Model No.DUR368A CORDLESS GRASS TRIMMER

Item	Parts No.	Description	I/C	Qty	New/Old	Opt. 1	Opt. 2	Note
D10		INC. 34,57						
036	619462-7	ROTOR		1				
037	911128-8	P.H.SCREW M4X16 WITH WR		2				
038	455628-3	INNER COVER		1				
039	620562-8	CONTROLLER B		1				
040	911128-8	P.H.SCREW M4X16 WITH WR		1				
041	687042-7	STRAIN RELIEF		1				
042	922223-9	H.S.H.BOLT M5X16 WITH WR		2				
043	922241-7	HEX. SOCKET HEAD BOLT M5X25		1				
044	143039-1	MOTOR HOUSING COMPLETE		1				
045	211131-2	BALL BEARING 6001DDW		1				
046	962106-1	RETAINING RING R-28		1				
047	346084-7	CLAMP WASHER		1				
048	140L84-9	RECEIVE WASHER COMPLETE G		1				
049	266579-3	HEX SOCKET HEAD BOLT M6X30		2				
051	346073-2	PROTECTOR CLAMP		1				
052	261156-6	POLYPROPYLENE WASHER 4		2				
053	455926-5	PROTECTOR		1				
054	346855-2	CUTTER		1				
055	266326-2	TAPPING SCREW 4X18		2				
056	140L89-9	PIPE COMPLETE O		1				
C10	819312-8	MAKITA LOGO LABEL		1				
C20	819N87-3	CAUTION LABEL		1				
057	213325-5	O RING 19		1				
058	168526-9	CUP		1				
059	264025-0	HEX. NUT M10-17		1				
060	183A77-7	GRIP SET		1				
D10		INC. 67						
061	455629-1	LOCK OFF LEVER		1				
062	233621-5	TORSION SPRING 9		1				
063	632E40-6	SWITCH UNIT		1				
064	455816-2	SWITCH LEVER		1				
065	233612-6	TORSION SPRING 10		1				
066	140L81-5	SUB CONTROLLER COMPLETE G		1				
C10	819N38-6	SWITCH LABEL		1				
C20	819N39-4	INDICATION LABEL		1				
067	183A77-7	GRIP SET		1				
D10		INC. 60						
068	911258-5	PAN HEAD SCREW M5X35		1				
069	266326-2	TAPPING SCREW 4X18		5				

Please order the parts with part number.

Print Date 12/7/2019

Model No.DUR368A CORDLESS GRASS TRIMMER

Item	Parts No.	Description	I/C	Qty	New/Old	Opt. 1	Opt. 2	Note
072	266896-1	HEX. SOCKET HEAD BOLT M5X20		2				
073	346785-7	PROTECTOR CLAMP		1				
074	455815-4	PROTECTOR		1				
075	253428-3	SPRING WASHER 6		2				
076	413143-3	WASHER		2				
A01	125516-5	BAND ASSEMBLY		1				
A02	198893-8	CUTTER ASSEMBLY 95-M10L SET ME		1				
A04	195150-5	CUTTER BLADE SET		1				
A05	456924-2	TOOL COVER		1				
A06	783202-0	HEX. WRENCH 4		1				
A07	831304-7	ACCESSORY BAG		1				
A08	783217-7	HEX. WRENCH 5		1				
A09	783013-3	BOX DRIVER 16-17		1				
A10	126642-3	PLASTIC BLADE ASSEMBLY255-M10L		1				
A11B	***DC18RD	DC18RD TWO PORT FAST CHARGER		1				
D10		COMPO-PARTS						
A12B	197280-8	BATTERY BL1850B SET		2				

Please order the parts with part number.

Print Date 12/7/2019