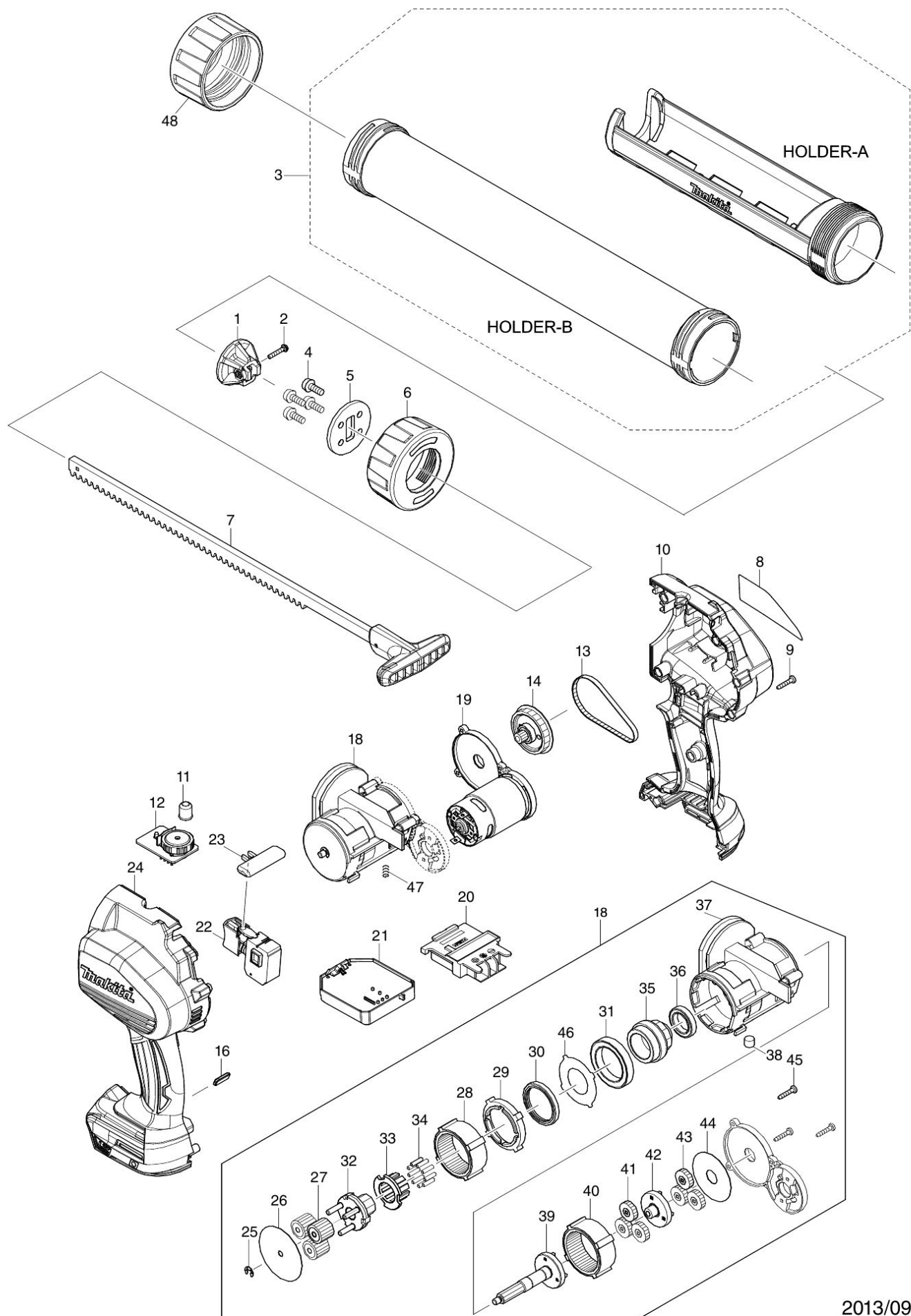


Item	Parts_No.	Parts_Description	Qty	Unit
1	142071-2	PISTON A COMPLETE	1	PC.
1	142072-0	PISTON B COMPLETE	1	PC.
001A	142071-2	PISTON A COMPLETE	1	PC.
2	266827-0	PAN HEAD SCREW M3X18 WITH WR	1	PC.
3	454275-7	HOLDER A	1	PC.
3	141861-0	HOLDER B COMPLETE	1	PC.
003A	454275-7	HOLDER A	1	PC.
003B	454275-7	HOLDER A	1	PC.
003C	454275-7	HOLDER A	1	PC.
4	265074-0	PAN HEAD SCREW M5X16	4	PC.
5	346649-5	PLATE	1	PC.
6	454223-6	HOLDER JOINT A	1	PC.
6	318958-2	HOLDER JOINT B	1	PC.
006A	454223-6	HOLDER JOINT A	1	PC.
006B	454223-6	HOLDER JOINT A	1	PC.
006C	454223-6	HOLDER JOINT A	1	PC.
7	142041-1	RACK 42 COMPLETE	1	PC.
7	142042-9	RACK 64 COMPLETE	1	PC.
007A	142041-1	RACK 42 COMPLETE	1	PC.
007B	142041-1	RACK 42 COMPLETE	1	PC.
007C	142041-1	RACK 42 COMPLETE	1	PC.
8	815F86-5	DCG180 NAME PLATE	1	
9	266429-2	TAPPING SCREW 3X16	9	PC.
10	187618-5	HOUSING SET	1	PC.
10	263005-3	RUBBER PIN 6	2	PC.
10		INC. 24	0	
11	418821-0	LENS	1	PC.
12	620180-2	SUB CONTROLLER	1	PC.
13	225097-0	SYNCHRO BELT 4-176	1	PC.
14	142038-0	SPUR GEAR 9A COMPLETE	1	PC.
16	454230-9	LENS	1	PC.
18	126253-4	GEAR ASSEMBLY	1	PC.
18		INC. 25-46	0	
19	142066-5	MOTOR COMPLETE	1	PC.
20	643860-3	TERMINAL	1	PC.
21	632A61-4	CONTROLLER UNIT	1	PC.
21	688172-7	LINE FILTER	1	PC.
021A	632A61-4	CONTROLLER UNIT	1	PC.
021A	688172-7	LINE FILTER	1	PC.
021B	632A61-4	CONTROLLER UNIT	1	PC.
021B	688172-7	LINE FILTER	1	PC.
021C	632A61-4	CONTROLLER UNIT	1	PC.
021C	688172-7	LINE FILTER	1	PC.
22	650632-9	SWITCH	1	PC.
23	451162-1	LOCK LEVER	1	PC.
24	187618-5	HOUSING SET	1	PC.
24	263005-3	RUBBER PIN 6	2	PC.
24		INC. 10	0	
25	961011-9	STOP RING E-4	1	PC.
26	267465-1	FLAT WASHER 5	1	PC.
27	227311-0	SPUR GEAR 19B	3	PC.
28	227309-7	INTERNAL GEAR 48	1	PC.
29	454220-2	SPACER	1	PC.
30	213768-1	OIL SEAL 30	1	PC.
31	211294-4	BALL BEARING 6806LLU	1	PC.



32	141860-2	CARRIER A COMPLETE	1 PC.
33	313253-5	CARRIER B	1 PC.
34	256255-7	PIN 3	9 PC.
35	227312-8	SPUR GEAR 10	1 PC.
36	211482-3	BALL BEARING 6803LLU	1 PC.
37	454219-7	GEAR HOUSING	1 PC.
38	313257-7	MAGNET	1 PC.
39	141859-7	SPUR GEAR 9C COMPLETE	1 PC.
40	227309-7	INTERNAL GEAR 48	1 PC.
41	227310-2	SPUR GEAR 19A	3 PC.
42	141858-9	SPUR GEAR 9B COMPLETE	1 PC.
43	227310-2	SPUR GEAR 19A	3 PC.
44	267466-9	FLAT WASHER 12	1 PC.
45	266429-2	TAPPING SCREW 3X16	3 PC.
46	346721-3	PLATE 23	1 PC.
47	234315-5	COMPRESSION SPRING 6	1 PC.
48	318958-2	HOLDER JOINT B	1 PC.
A01	195246-2	SAFETY GOGGLE	1 PC.
A02	***DC18RC	DC18RC FAST CHARGER	1 PC.
A02	123221-8	PISTON C ASSEMBLY	1 PC.
A03	196235-0	BATTERY BL1815N SET	2 PC.
A03	142071-2	PISTON A COMPLETE	1 PC.
A03A	194513-2	BATTERY BL1815 SET	2 PC.
A03B	194204-5	BATTERY BL1830 SET	2 PC.
A03C	196235-0	BATTERY BL1815N SET	2 PC.
A04	821568-1	PLASTIC CASE	1 PC.
A04	266827-0	PAN HEAD SCREW M3X18 WITH WR	2 PC.
A04	162271-8	LATCH	2 PC.
A05	803B53-8	DCG180RYE PLASTIC CASE LABEL	2
A05	424547-4	RUBBER RING	1 PC.
A05A	802X75-7	DCG180RHE PLASTIC CASE LABEL	2
A05B	802X73-1	DCG180RFE PLASTIC CASE LABEL	2
A05C	803B53-8	DCG180RYE PLASTIC CASE LABEL	2
A06	450128-8	BATTERY COVER	1 PC.
A06	454226-0	NOZZLE	3 PC.
A06A	450128-8	BATTERY COVER	1 PC.