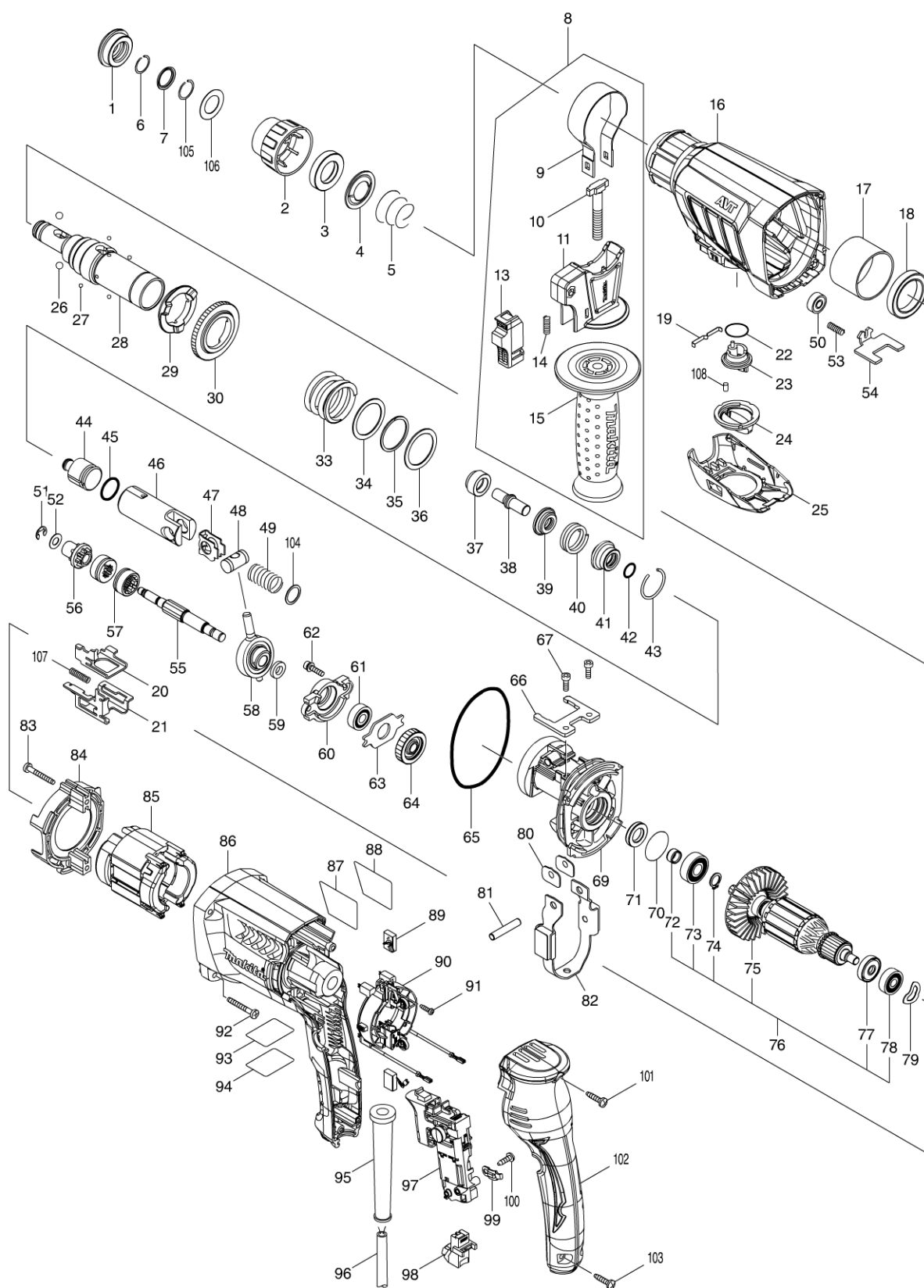


**Modelnummer HR2631F 26MM COMBINATION HAMMER**



# Modelnummer HR2631F 26MM COMBINATION HAMMER

Page 1 / 3

Artikel	Reservedelsn	Beskrivelse	I/C	Qty	N/O	Opt. 1	Opt. 2	Note
001	286288-8	STØVBESKYTTER 35 (HR2300)		1				
002	455393-4	CHUCK COVER		1				
003	325813-1	RING 21 (HR2300)		1				
004	346177-0	SKIVE (HR2300)		1				
005	233916-6	SPIRALFJEDER 21-29 (HR2440)		1				
006	233989-9	RING 14 (HR2300)		1				
007	346834-0	WASHER 16		1				
008	122878-2	SIDEGREB KPL. (HR2300)		1				
D10		INC. 9-11,13-15						
009	346181-9	FJEDER 50 (HR2300)		1				
010	266349-0	SQUARE BOLT M8X50		1				
011	451539-0	GREBHOLDER (HR2300)		1				
013	141765-6	LOCK BUTTON COMPLETE		1				
014	233360-7	TRYKFJEDER 4 (MT953)		1				
015	154935-8	GRIP 36 COMPLETE		1				
016	142970-8	GEAR HOUSING COMPLETE		1				
C10	213636-8	PAKNING 25 (MT870)		1				
017	331890-3	HYLSTER (HR2300)		1				
018	211294-4	KUGLELEJE (HR2300)		1				
019	232286-0	LEAF SPRING		1				
020	346833-2	CHANGE PLATE B		1				
021	346832-4	CHANGE PLATE A		1				
022	213278-8	O-RING 17 (HR2440)		1				
023	455392-6	CHANGE LEVER		1				
024	455394-2	CHANGE LEVER CAP		1				
025	455391-8	CHANGE LEVER COVER		1				
026	216022-2	STÅLKUGLE 7.0 HR160DW		2				
027	216019-1	STÅLKUGLE 3 6960DW		4				
028	142972-4	TOOL HOLDER COMPLETE		1				
C10	213344-1	PAKNING 9 (HR2800)		1				
029	332139-4	DRIVING FLANGE		1				
030	227360-7	SPUR GEAR 51		1				
033	234148-8	FJEDER 31 (HR2300)		1				
034	267153-0	SKIVE 30 (HR2300)		1				
035	257932-4	SKIVE 30 (HR2300)		1				
036	267153-0	SKIVE 30 (HR2300)		1				
037	325783-4	HYLSTER 9B (HR2601)		1				
038	325789-2	SLAGBOLT A (HR2300)		1				
039	325792-3	SKIVE 10 (HR2601)		1				
040	234149-6	TRYKFJEDER 20 (HR2601)		1				
041	325793-1	O-RING-HUS B (HR2601)		1				
042	213073-6	O-RING 9 (HR2440)		1				
043	233979-2	RING 28 (HR2300)		1				
044	325784-2	HAMMER (HR2300)		1				
045	213258-4	O-RING 17,5 (HR2220)		1				
046	310345-1	STEMPEL (HR2300)		1				
047	346036-8	FØRINGSPLADE (BHR261)		1				
048	324215-8	STIFT		1				

Please order the parts with a part number.

Print Date 28/05/2015

# Modelnummer HR2631F 26MM COMBINATION HAMMER

Page 2 / 3

Artikel	Reservedelsn	Beskrivelse	I/C	Qty	N/O	Opt. 1	Opt. 2	Note
049	234098-7	COMPRESSION SPRING 14		1				
050	210028-2	KUGLELEJE 606ZZ (UC3520A)		1				
051	257336-0	STOP RING EXT U-6		1				
052	253186-1	FLAT WASHER 7		1				
053	233360-7	TRYKFJEDER 4 (MT953)		1				
054	346831-6	LOCK PLATE		1				
055	326448-1	CAM SHAFT		1				
056	227359-2	SPUR GEAR 10		1				
057	332125-5	CLUTCH CAM		2				
058	219023-9	SWASH BEARING 10		1				
059	257321-3	RING 8 (MT870)		1				
060	310344-3	LEJEHUS (HR2300)		1				
061	211032-4	BALL BEARING 608ZZ		1				
062	266437-3	6-KANT SKRUE M4x16 (HR4010C)		2				
063	285735-6	AFDÆKNING (HR2300)		1				
064	227719-8	TANDHJUL 26 (HR2300)		1				
065	213728-3	O-RING 68 (BHR261)		1				
066	346222-1	PLADE (HR2601)		1				
067	265353-6	SKRUE M4X12 (4341CT)		2				
069	141573-5	INNER HOUSING COMPLETE		1				
C10	443153-6	FILT (HR2300)		1				
070	213407-3	O-RING 26 (SR1600)		1				
071	213678-2	PAKNING 12 (MT870)		1				
072	262569-4	HYLSTER 9 (HR2300)		1				
073	211097-6	BALL BEARING 6000LLB		1				
074	961006-2	LÅSERING S-10		1				
075	240121-8	FAN 65 (HR2610)		1				
076	515359-7	ANKER 240V (HR2601)		1				
D10		INC. 72-75,77,78						
077	681652-2	ISOLATIONSSKIVE (JR140DWD)		1				
078	210023-2	KUGLELEJE 627DDW		1				
079	267804-5	WAVE WASHER 15		1				
080	346180-1	FØRINGSPLADE (HR2601)		2				
081	256246-8	STIFT 6 (LS1216L)		1				
082	165593-5	KONTRAVÆGT (HR2601)		1				
083	266361-0	SKRUE 4X30(9555NB)		2				
084	451527-7	FELTAFDÆKNING (HR2300)		1				
085	626634-7	FELD 240V (HR2601)		1				
086	451535-8	MOTORHUS (HR2611FT)		1				
087	850L56-3	HR2631F NAME PLATE		1				
088	819390-8	LABEL (HR2300)		1				
089	194074-2	KULSÆT CB-325		1				
090	638655-7	KULHOLDER (HR2300)		1				
091	266556-5	SKRUE 3x12 (HR2300)		2				
092	266361-0	SKRUE 4X30(9555NB)		4				
093	850L61-0	HR2631F SERIAL NO. LABEL		1				
094	819389-3	LABEL (HR2300)		1				
095	682566-8	STUDS 10 (RP0910)		1				

Please order the parts with a part number.

Print Date 28/05/2015

## Page 3 / 3

Print Date 28/05/2015