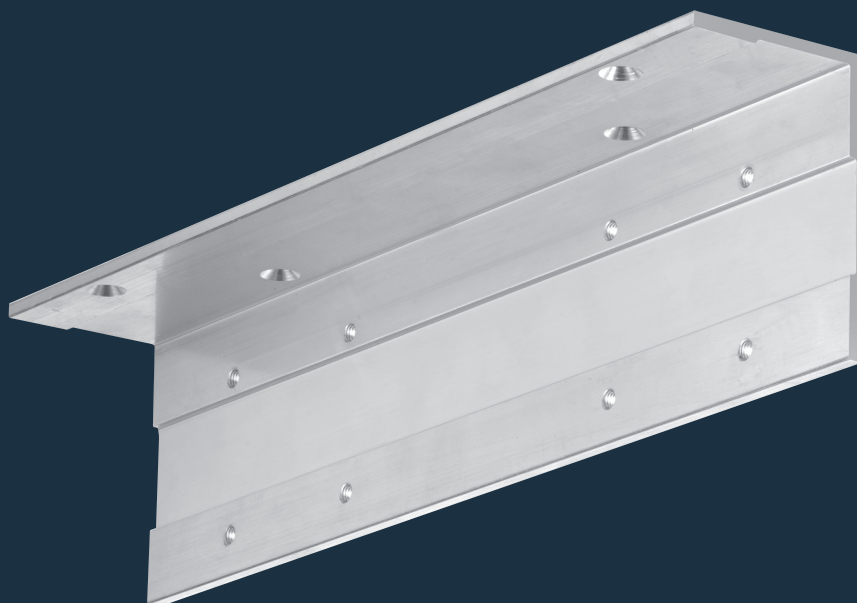




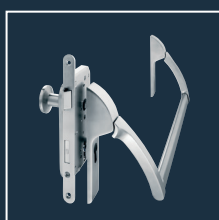
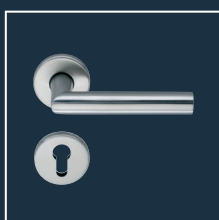
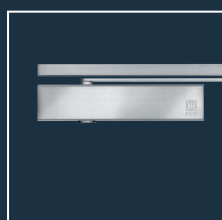
# ECO Accessories

## Under-lintel angle

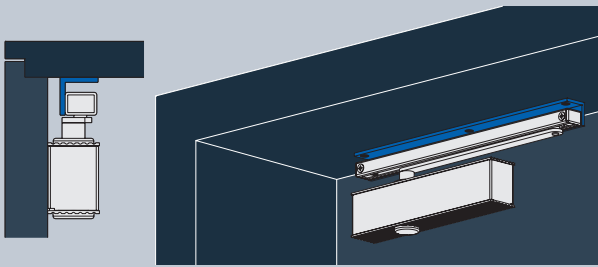
Product information



### ■ SYSTEM TECHNOLOGY FOR THE DOOR



## Accessories – Under-lintel angle

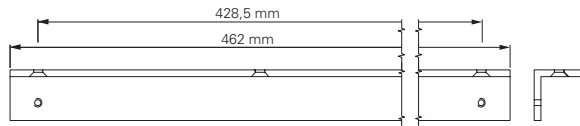


Under-lintel angle for standard mounting door closer with slide rail



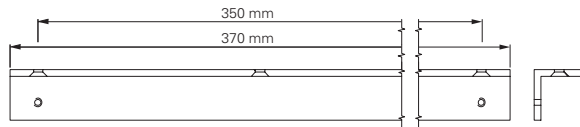
### Under-lintel angle for slide rail B and K

For standard mounting installation of the slide rail on hinge-opposite side for doors with deep door lintels. Under-lintel angle made of aluminium.

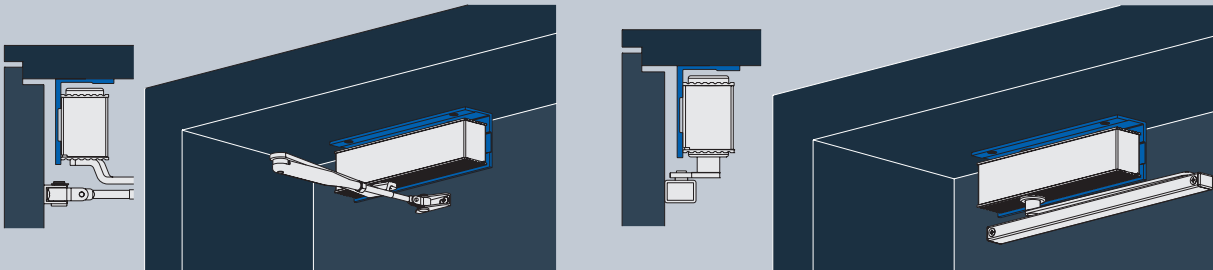


Under-lintel angle for slide rail B

Under-lintel angle	Material	Article number
Under-lintel angle slide rail B	Aluminium	350300J00A00000
Under-lintel angle slide rail K	Aluminium	300340E00A00000



Under-lintel angle for slide rail K

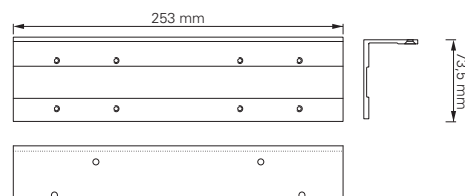


Under-lintel angel for head mounting door closer with standard arm (l.) or door closer with slide rail (r.).

### Under-lintel angle for door closers with slide rail / standard arm

For head mounting of the door closer on hinge-opposite side for doors with deep door lintels. Under-lintel angle made of aluminium.

Under-lintel angle	Article number
ECO Newton TS-61	350310E00A00000
ECO Newton TS-51	350320E00A00000
ECO Newton TS-41/31/50/20	300330E00A00000



ECO Schulte GmbH & Co. KG  
Iserlohner Landstraße 89  
D - 58706 Menden

Telefon: +49 2373/9276-0  
Fax: +49 2373/9276-40

[info@eco-schulte.de](mailto:info@eco-schulte.de)  
[www.eco-schulte.de](http://www.eco-schulte.de)

© ECO Schulte GmbH & Co. KG - Änderungen vorbehalten  
© ECO Schulte GmbH & Co. KG - Subject to change