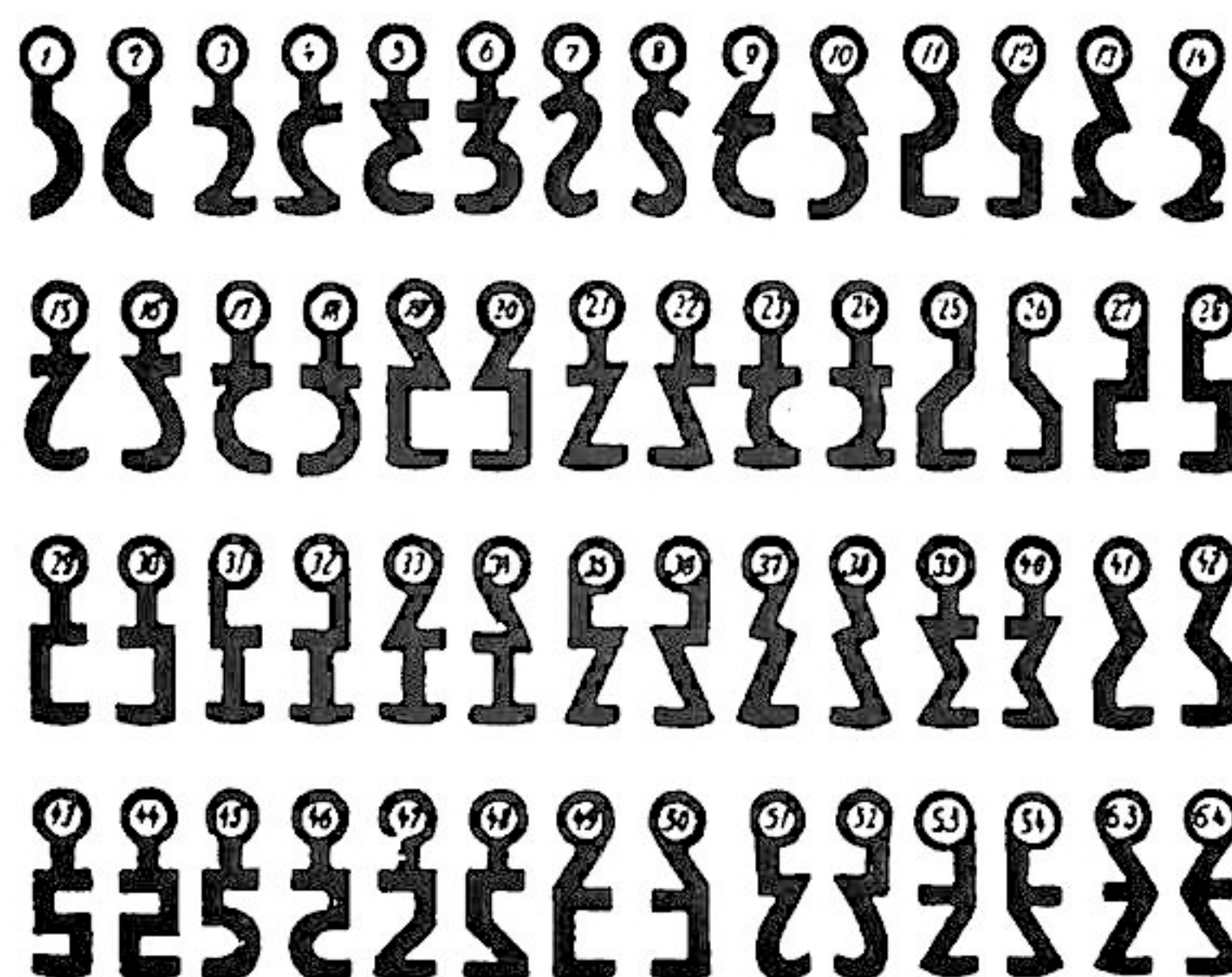


**Danzigernøgle, forniklet stål,  
med 8 mm profilkam**

Beslaco nummer	lukning nummer	Beslaco nummer	lukning nummer
40 72-90 01	1	40 72-90 33	33
40 72-90 02	2	40 72-90 34	34
40 72-90 03	3	40 72-90 35	35
40 72-90 04	4	40 72-90 36	36
40 72-90 05	5	40 72-90 37	37
40 72-90 06	6	40 72-90 38	38
40 72-90 07	7	40 72-90 39	39
40 72-90 08	8	40 72-90 40	40
40 72-90 09	9	40 72-90 41	41
40 72-90 10	10	40 72-90 42	42
40 72-90 11	11	40 72-90 43	43
40 72-90 12	12	40 72-90 44	44
40 72-90 13	13	40 72-90 45	45
40 72-90 14	14	40 72-90 46	46
40 72-90 15	15	40 72-90 47	47
40 72-90 16	16	40 72-90 48	48
40 72-90 17	17	40 72-90 49	49
40 72-90 18	18	40 72-90 50	50
40 72-90 19	19	40 72-90 51	51
40 72-90 20	20	40 72-90 52	52
40 72-90 21	21	40 72-90 53	53
40 72-90 22	22	40 72-90 54	54
40 72-90 23	23	40 72-90 55	55
40 72-90 24	24	40 72-90 56	56
40 72-90 25	25	40 72-90 57	57
40 72-90 26	26	40 72-90 58	58
40 72-90 27	27	40 72-90 59	59
40 72-90 28	28	40 72-90 60	60
40 72-90 29	29	40 72-90 61	61
40 72-90 30	30	40 72-90 62	62
40 72-90 31	31	40 72-90 63	63
40 72-90 32	32	40 72-90 64	64

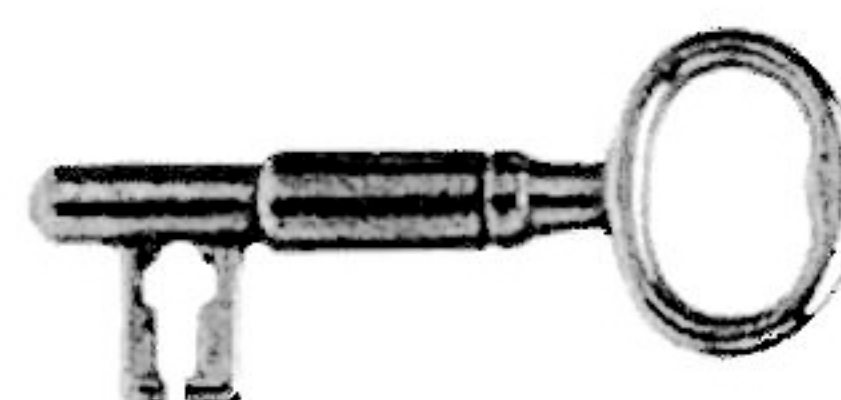


018



**Københavnernøgle, stål**

Beslaco nummer	overflade behandling	lukning nummer	kode
40 72-95 00	forniklet	universal	145
40 72-95 01	forniklet	1	146-1
40 72-95 02	forniklet	2	146-2
40 72-95 03	forniklet	3	146-3



018