

PRODUCT DATA SHEET

HAPATEC HELI A2/A4

PRODUCT DESCRIPTION

The Hapatec Heli of **A2/A4 stainless steel** is a **panel fastener**. The screw has an ornamental head with **TX drive**.

MATERIAL

A2 stainless steel:

- Suitable for salty atmospheres to a limited extent
- Acid-resistant to a limited extent
- Suitable for chlorine-containing atmospheres to a limited extent
- Can be used in use classes 1, 2 and 3
- Not suitable for timbers containing a large amount of tannins such as cumarú, oak, merbau, robinia, etc.



A4 stainless steel:

- Suitable for timbers containing a large amount of tannins such as cumarú, oak, merbau, robinia, etc
- Suitable for salty atmospheres
- Acid-resistant to a limited extent
- Can be used in use classes 1, 2 and 3
- Suitable for chlorine-containing atmospheres to a limited extent



APPROVAL

- European Technical Assessment ETA-11/0024
Self-drilling screws as timber fasteners



APPLICATION IMAGE



Use of the Hapatec Heli

PRODUCT DATA SHEET

HAPATEC HELI A2/A4

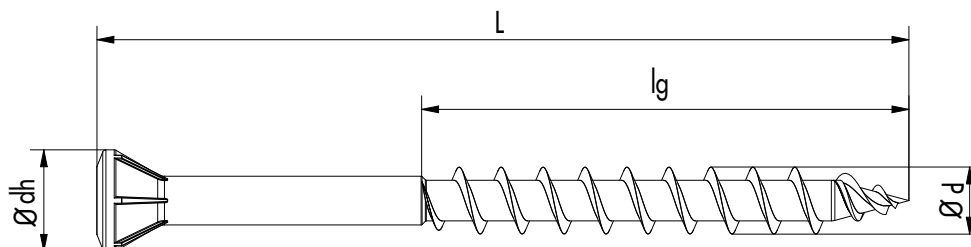
ADVANTAGES

- The special screw geometry reduces the torque needed to drive it in
- This means that the risk of the screw tearing off from the relatively soft A2/A4 stainless steel is thus reduced
- Screws can be screwed in smoothly thanks to the TX drive

PRODUCT TABLE

Hapatec Heli stainless steel A2, A4					
Art. no.	Dimensions Ød x L [mm]	Thread length lg [mm]	Head diameter Ødh [mm]	Drive	PU
A2 stainless steel					
100060	5.0 x 50	30	7.5	TX25 •	200
100062	5.0 x 60	36	7.5	TX25 •	200
100060-EIMER-500	5,0 x 50	30	7,5	TX25 •	500
100062-EIMER-500	5,0 x 60	36	7,5	TX25 •	500
A4 stainless steel					
100059	4.5 x 50	30	7.0	TX20 •	200
100059/BLACK	4.5 x 50	30	7.0	TX20 •	200
100055	4.5 x 60	36	7.0	TX20 •	200
100056	4.5 x 70	42	7.0	TX20 •	200
100057	4.5 x 80	48	7.0	TX20 •	200
100051	5.0 x 50	30	7.5	TX25 •	200
100052	5.0 x 60	36	7.5	TX25 •	200
100053	5.0 x 70	42	7.5	TX25 •	200
100054	5.0 x 80	48	7.5	TX25 •	200
100058	5.0 x 100	60	7.5	TX25 •	200
100051-EIMER-500	5,0 x 50	30	7,5	TX25 •	500
100052-EIMER-500	5,0 x 60	36	7,5	TX25 •	500
100053-EIMER-500	5,0 x 70	42	7,5	TX25 •	500
100054-EIMER-500	5,0 x 80	48	7,5	TX25 •	500

DRAWING



Side view

If you are not familiar with how this product is used, and particularly with the product's intended use, please contact our Application Technology Department (technik@eurotec.team).