

Key escutcheon Ø50 w/key hole

Classic Collection

d line

PRODUCT DATA SHEET

ITEM NUMBER

42.2830.02.215

42.2830.P1.215

42.2830.P2.215

42.2830.P4.215

42.2830.R5.215

42.2830.R6.215

42.2830.R7.215

42.2830.R1.215

SURFACE

Satin finish stainless steel

PVD Gunmetal

PVD Copper

PVD Charcoal

Matt dusty grey, RAL 7037

Matt light grey, RAL 7047

Matt white, RAL 9016

Matt black, RAL 9005

PRODUCT

Key escutcheon Ø50 w/key hole, pair set, cc 38

PICTURE



TENDER TEXT

Key escutcheon iconic, timeless and classic design, Ø50 w/key hole, cc38.
Material: stainless steel AISI 304 satin finish. W:50 mm x H:50 mm x D:2 mm.

PRODUCT SPECIFICATION

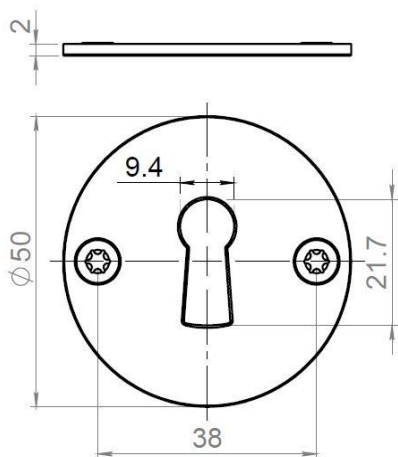
Dimensions: W:50 mm x H:50 mm x D:2 mm.

Material: stainless steel AISI 304

Surface finish: satin finish, crafted by hand

Warranty for stainless steel - 20 years

DRAWING



SPARE PARTS / ACCESSORIES:

P0.0000.00.302 - Wood screw Ø3x12, ser of 4 pcs.

P0.0000.00.080 - Sectioned bolts Ø4x110mm set.

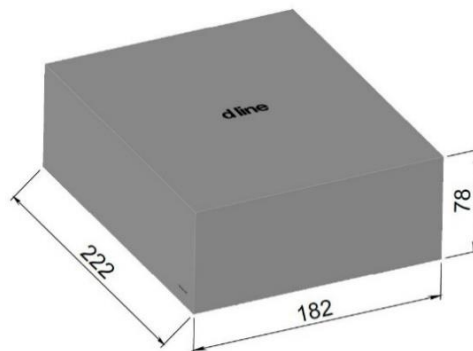
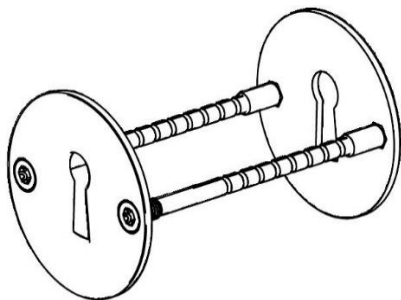
MOUNTING:

See instruction supplied with product.

PACKING:

1 set. per box if packed with handle pair

ISO-DRAWING



PRODUCT CARE

To sustain the unique d line finish appearance please follow the below instructions:

- Wash down the surfaces using soapy water or mild detergent
- Always thoroughly rinse off with clean water
- To complete the cleaning procedure dry/polish the surfaces with a soft dry cloth

Please do not use scouring powder, steel wool, chloride based detergents or other aggressive cleaning products as these may damage the surface.

If spots or corrosion appear on the surface it is not due to the stainless steel quality, but to impurities in the environment, aggressive conditions or improper or insufficient cleaning.