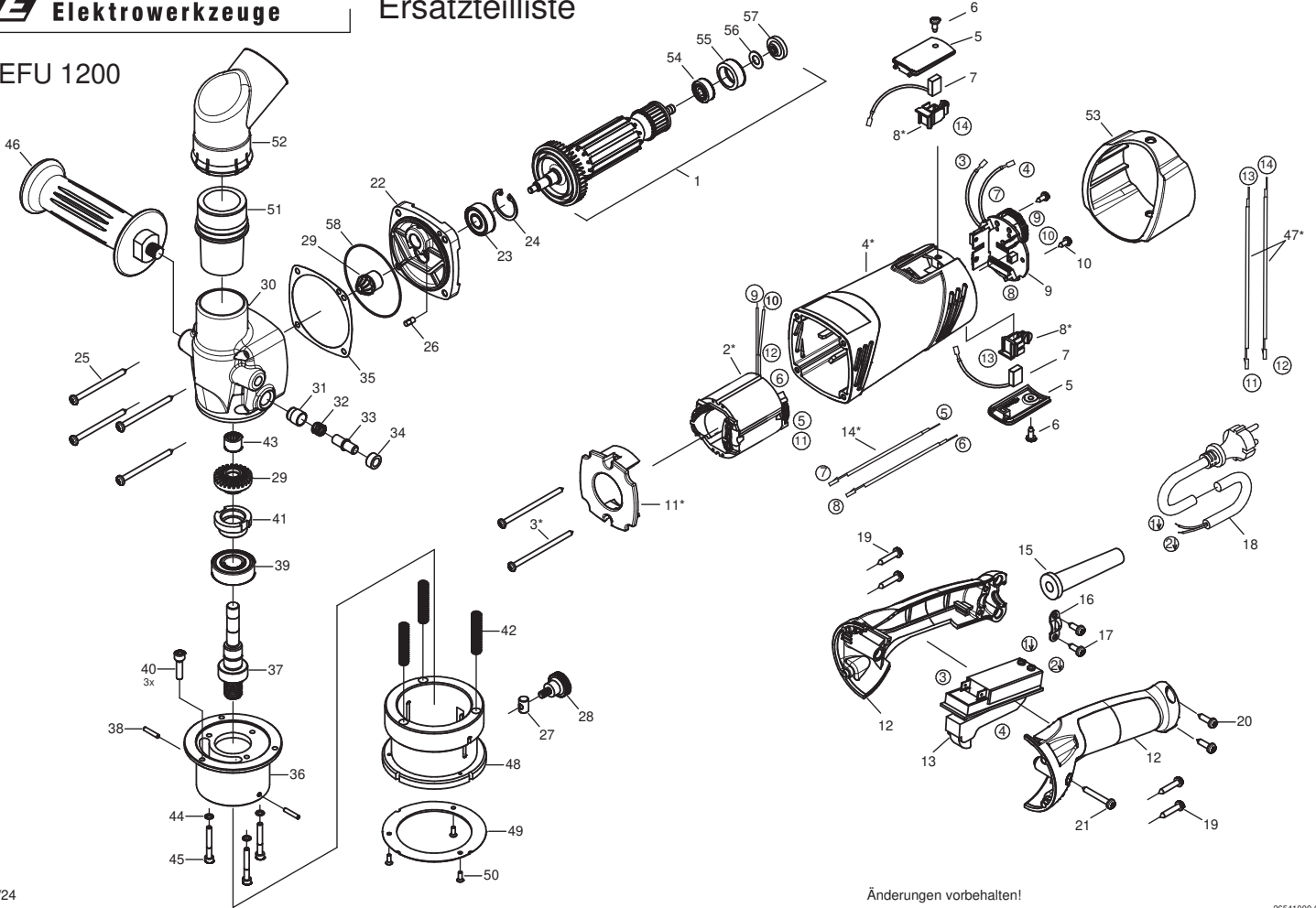


Ersatzteilliste

EFU 1200





06541000

EFU 1200 - 230V

Version:

01

Dated: 01.02.2024

Pos.	Description	Item No.	pc.
*	Motor housing, compl. 230V	7570C204	1
1	Rotor, compl. 230V	76541100	1
2	Stator, compl. 230V	75412150	1
3	Screw 3,9x70	80201265	2
4	Motor housing	80900175	1
5	Brush cover	80900178	2
6	Screw 3,9x9,5	80201260	2
7	Carbon brush 5x10x16	80700037	2
8	Brush holder 5x10	80204500	2
9	Printed circuit board 230V	80601161	1
10	Screw 3,5x9,5	80201109	2
11	Air guiding ring	80900174	1
12	Handle caps	80900179	1
13	Switch	80600148	1
14	Connecting wire	80600244	2
15	Cable grommet	83000004	1
16	Wire locking flange	85000020	1
17	Screw 4,2x13	80201270	2
18	Connecting cable 2x1mm ² 5m	80600245	1
19	Screw 4,2x22	80201272	4
20	Screw 4,2x16	80201271	2
21	Screw 4,2x32	80201179	1
22	End shield of gearing	76541610	1
23	Grooved ball bearing 6000 2RSL C3	80410029	1
24	Retaining ring 26x1,2	80201329	1
25	Screw 4,2x60	80201519	4
26	Grooved pin 4x10	80200581	1
27	Cross dowel M5	80200638	1
28	Knurled screw M5x10	85000225	1
29	Bevel pinion + Bevel gear	85000301	1
30	Gearbox housing	76541400	1
31	Bush 1	75412554	1
32	Compression spring	80200802	1
33	Bolt	75412425	1
34	Bush 2	75412555	1
35	Adjusting foil	82000447	1
36	Housing cover	76541405	1
37	Work spindle	76541420	1
38	Parallel pin 3x16	80201501	2
39	Grooved ball bearing 6202 2RS	80410112	1

Pos.	Description	Item No.	pc.
40	Screw M5x20	80201121	3
41	Locking	75412550	1
42	Compression spring	80200676	3
43	Needle sleeve HK1010	80420115	1
44	Lock washer S4	80201365	3
45	Screw M4x30	80201516	3
46	Handle	80900197	1
47	Connecting wire	80600249	2
48	Protection ring	76541410	1
49	Slide plate	85000421	1
50	Screw M3x8	80201438	3
51	Holder	76541595	1
52	Suction piece	7620P593	1
53	Splash guard	80900107	1
54	Grooved ball bearing 627 2RSL	80410027	1
55	Bearing cap	83000204	1
56	Fibre washer 7x12x1	82000951	1
57	Magnetic ring 19,4x7x6	80701005	1
58	O-ring 63x1	83000247	1