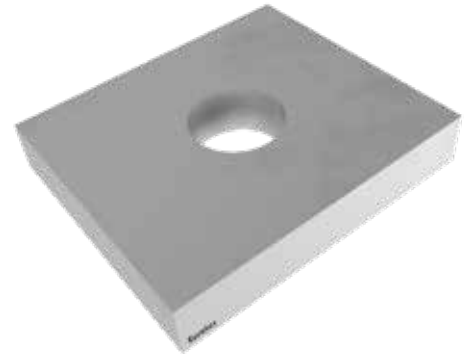


PRODUCT DATA SHEET

TENSION ROD PRESSURE PLATE 340/440/540

PRODUCT DESCRIPTION

The Tension rod pressure plate 340/440/540 can be combined with the matching tension rod 340/440/540. The former is necessary to prevent a deformation of the tension rod and to increase the tensile forces.



ADVANTAGES

- Ideal for anchoring cross-laminated timber elements (CLT)
- For installation in wood and concrete

MATERIAL

- Galvanised S355 construction steel



Note

The Tension rod pressure plate 340/440/540 may only be used in combination with the Tension rod 340/440/540 (Art. no.: 954099, 954100, 954231).

CERTIFICATION

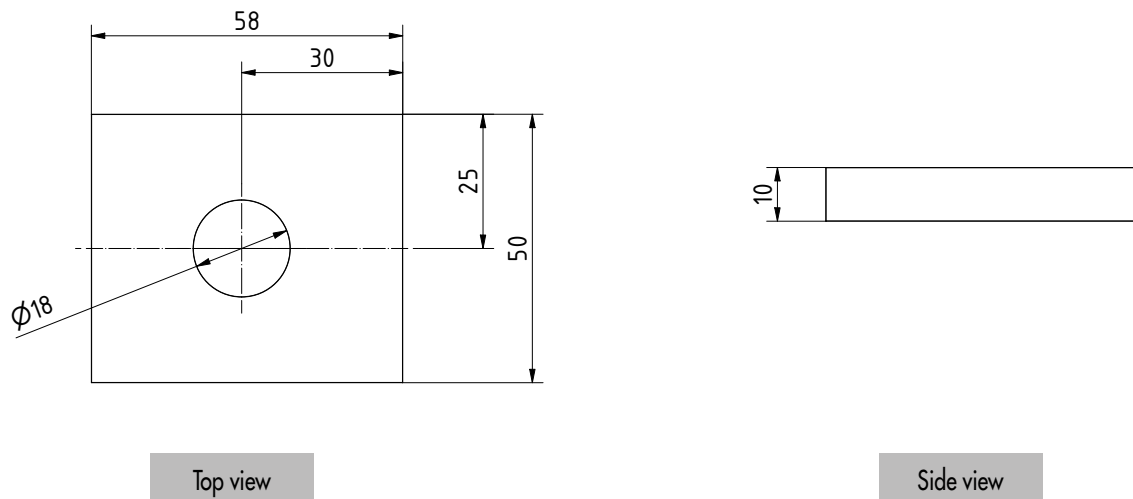
- European Technical Assessment ETA-19/0020



PRODUCT DATA SHEET

TENSION ROD PRESSURE PLATE 340/440/540

TECHNICAL INFORMATION



INSTRUCTIONS FOR USE

The tension rods are positioned on the planking in the floor area to mark the drill hole. The tension rod is then put aside to drill and clean the hole, and finally the tension rod is glued in using injection mortar. Now the tension rod incl. pressure plate can be positioned and fastened to the stem or wooden element with WBS screws or anchor nails. Finally, the nut is screwed onto the anchor rod using the relevant torque. The connection can safely transfer tensile, suction and shearing forces into the tension rod via the screws and finally into the base plates via a dowel.

Edge and centre distances according to EC5 as well as the curing time and tightening torque of the concrete anchor must be observed.

PRODUCT TABLE

Tension rod pressure plate 340/440/540				
Art. no.	Designation	Dimension [mm]	Matching tension rod	PU
954110	Tension rod pressure plate 340/440/540	50 x 58 x 10	Tension rod 340 (954099) Tension rod 440 (954100) Tension rod 540 (954231)	1

If you are not familiar with how this product is used, and particularly with the product's intended use, please contact our Application Technology department (Technik@eurotec.team).