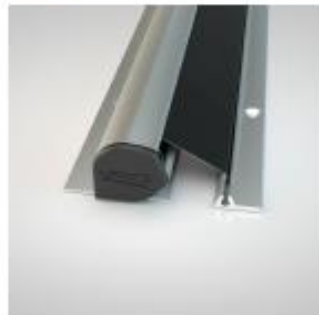


Klemsikring NR-25

Product images



Details

<i>Area of application</i>	Secondary closing edge, closing face
<i>Product description</i>	<ul style="list-style-type: none"> → NR-25 → a protection system with decades of proven performance → compact form → optional model for installation on glass doors → roller-type protector that automatically maintains a constant tension → fabric made of fire retardant → synthetic fibre

Function

<i>Protective function</i>	Selbsttätig auf konstante Spannung ziehendes Schutzrollo
<i>Maintenance free</i>	Yes
<i>Suitable for fire protection</i>	Suitable for use on fire and smoke protection doors

Technical data

<i>Limited passage width of door frame</i>	25
<i>Maximum length (mm)</i>	On request
<i>Fixed lengths</i>	Available
<i>Durability test cycles</i>	1 000 000 cycles

Installation

<i>Notes</i>	→ Not weather-proof
--------------	---------------------

Cross section drawing

